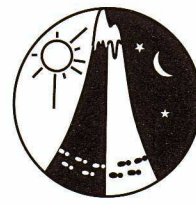


The Dish



WARA Winter 24 Hour Rogaine 22 and 23 June 2002

LEGEND

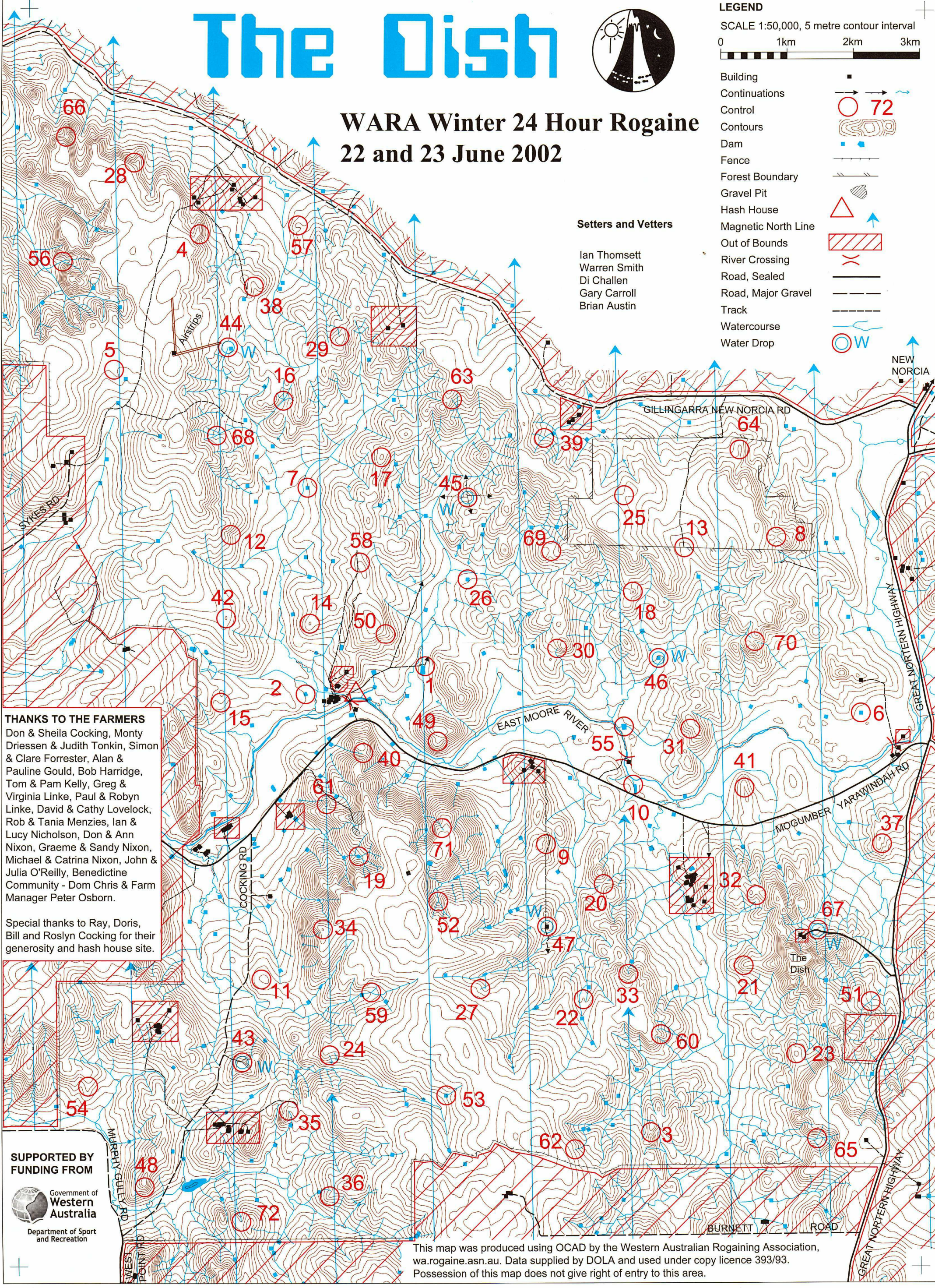
SCALE 1:50,000, 5 metre contour interval



Building	■
Continuations	→ →
Control	○ 72
Contours	
Dam	■
Fence	— — —
Forest Boundary	— — —
Gravel Pit	
Hash House	△
Magnetic North Line	↑
Out of Bounds	▨
River Crossing	— — —
Road, Sealed	— — —
Road, Major Gravel	— — —
Track	— — —
Watercourse	
Water Drop	○ W

Setters and Vectors

Ian Thomsett
Warren Smith
Di Challen
Gary Carroll
Brian Austin



THANKS TO THE FARMERS
Don & Sheila Cocking, Monty Driessen & Judith Tonkin, Simon & Clare Forrester, Alan & Pauline Gould, Bob Harridge, Tom & Pam Kelly, Greg & Virginia Linke, Paul & Robyn Linke, David & Cathy Lovelock, Rob & Tania Menzies, Ian & Lucy Nicholson, Don & Ann Nixon, Graeme & Sandy Nixon, Michael & Catrina Nixon, John & Julia O'Reilly, Benedictine Community - Dom Chris & Farm Manager Peter Osborn.

Special thanks to Ray, Doris, Bill and Roslyn Cocking for their generosity and hash house site.

SUPPORTED BY FUNDING FROM
Government of Western Australia
Department of Sport and Recreation

This map was produced using OCAD by the Western Australian Rogaining Association, wa.rogaine.asn.au. Data supplied by DOLA and used under copy licence 393/93. Possession of this map does not give right of entry to this area.

The Dish - WARA Winter 24 Hour Rogaine. 22 and 23 June 2002

No.	Description	Points	No.	Description	Points	Important Information	
1	The dam, northeast corner, on a fence	20	43	The knoll, south side of the track. Water drop	60	Control Cards From 1130 Saturday	
2	The dam, north west side, on a windmill	20	44	The watercourse, head of. Water drop	60		
3	The saddle	20	45	The gully, on the southern fence junction. Water drop	60		
4	The spur	20	46	The dam, southern side. Water drop	60		
5	The spur	20	47	The hay shed, south west corner. Water drop	60		
6	The dam, south side	20	48	The knoll, south side	60		Briefing 1150 Saturday
7	The dam, south side	20					
8	The eastern saddle	20	49	The spur	70		
9	The gully	20	50	The spur	70		Start 1200 Saturday
10	The dam, north side	20	51	The watercourse junction	70		
11	The broad knoll, west side	20	52	The watercourse junction	70		
12	The gully	20	53	The dam, west side	70		Finish 1200 Sunday
			54	The spur	70		
13	A track junction, north side of a fence	30					
14	The knoll	30	55	The dam, south west corner	80	Hash House Opens by 1600 Sat Closes about 1330 Sun	
15	The spur	30	56	The watercourse junction	80		
16	The southern watercourse junction	30	57	A knoll	80		
17	The knoll	30	58	The knoll, broad, north side	80	Sunset 1721 Saturday	
18	The knoll	30	59	The watercourse junction	80		
19	The dam, busted, north west side	30	60	The spur	80		
20	The saddle, on a fence	30					
21	The spur	30	61	The knoll	90	Sunrise 0713 Sunday	
22	The spur	30	62	The watercourse, head of	90		
23	The knoll	30	63	The western watercourse, head of	90		
24	The western watercourse, head of	30	64	The spur, near an old water tank	90	Moonrise 1512 Saturday	
			65	The middle watercourse junction	90		
25	The saddle	40	66	The saddle	90	Moonset 0517 Sunday	
26	The dam, 50 metres north, on a fence	40					
27	The watercourse, head of	40	67	The track bend, north side, at a gate. Water drop	100		
28	The gully, head of	40	68	The western watercourse junction	100		
29	The watercourse, head of	40	69	The saddle	100		
30	The watercourse, head of	40	70	The gully, head of	100	Late Penalty 10 points per minute or part minute	
31	The gully, head of	40	71	The watercourse, a track crossing	100		
32	The gully	40	72	The watercourse, head of	100		
33	Watercourse, head of	40					
34	The knoll	40		Water Drops at controls: 43, 44, 45, 46, 47, 67			
35	The watercourse, head of	40					
36	The spur	40		Patrolled Roads: Murphy Gully Rd., Cocking Rd., Mogumber - Yarawindah Rd., Great Northern Hwy, Gillingarra - New Norcia Rd.			
37	The gully, head of	50				Controls Used 72	
38	The gully	50		Bridges over East Moore River - SW of Hash House; Between 10 and 55; SE of 6.			
39	The watercourse junction	50					
40	The saddle	50					
41	The knoll, northern side	50				Total Points 3780	
42	The knoll	50					